



BLUeLiGHT[®]

LED SYSTEM

The perfect combination!
Why choose anything else?

PROFILE

In 2008 engineers at the Denmark based company Aarsleff A/S started pioneering development with the first prototypes of small LED light sources for curing flexible CIPP in laterals. The first idea was to use the initial developments in their own contracting businesses.

In 2015 Bluelight GmbH was founded as Aarsleff's daughter enterprise to become the B2B platform, starting to introduce and distribute the ground-breaking innovative technology in German speaking markets first. Years later the Bluelight LED system has written a great success story in the northern hemisphere.

Early 2024 the tremendous amount of more than 400 Bluelight power- and control-units are reliably operating day in day out in Europe and North America. Most units are active in core markets representing the highest quality standards in trenchless technology: in Europe Bluelight technology leads the markets by volume and quality in Germany, France, UK, Belgium, Austria, Switzerland and Scandinavia. Other southern and eastern European countries are developing positively.

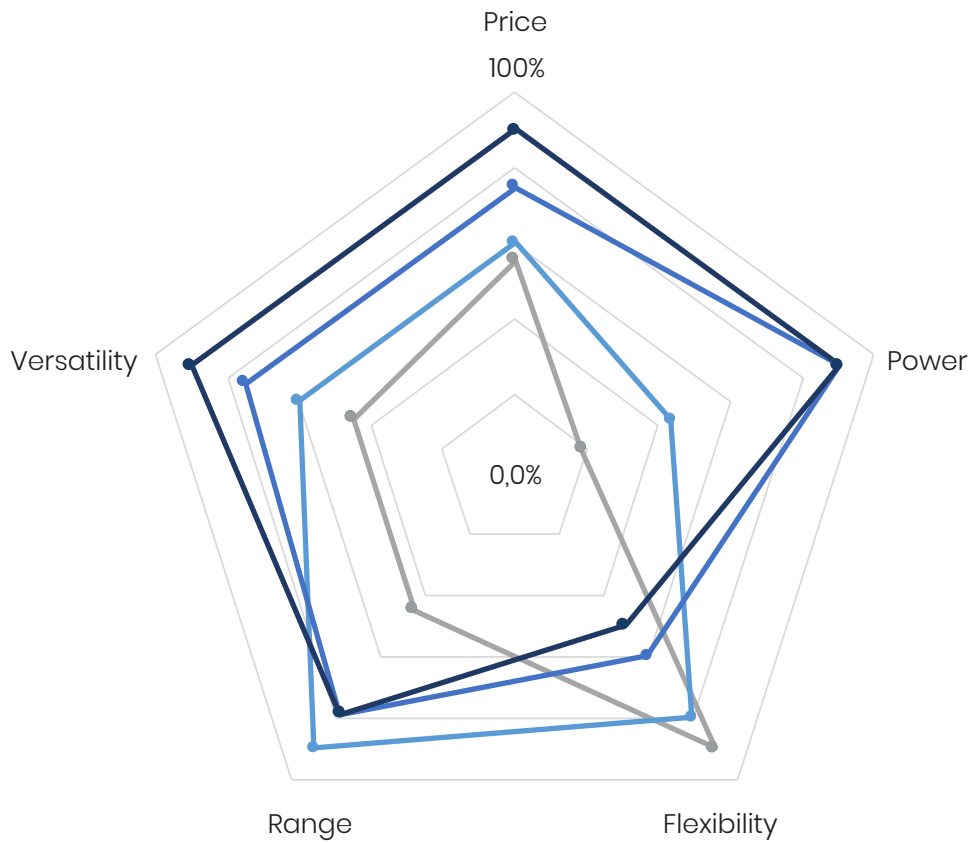
Within North America – operated by distribution partner HammerHead Trenchless – Bluelight is the leader in the United States and Canada. In Australia and New Zealand, Bluelight is distributed by partner SECA.





LED EQUIPMENT

(European patent: EP 2 129 956 B1)



Product Data	Unit	BlueLight LED Head 696	BlueLight LED Head 336-2	BlueLight LED Head 144
Curable CIPP Liners		PAA-F-Liner PAA-GF-Liner	PAA-F-Liner	
Diameter-Range	mm	100 – 300 (PAA-F-Liner) 200 – 500 (PAA-GF-Liner)	100 – 200	100 – 125 (F-Liner Std) 70 – 150 (F-Liner 3D)
Length of Push-rod	m	100 / 50		40
Input power	watt	1.442,3	696,3	298,4
Output power	watt	1.038,4	501,3	214,8
Efficiency at 50 degrees Celsius	%		72	
Length of the light source	cm	13,2	6,5	5,2
Width / Diameter of the light source	cm	5,2	5,2	4,1
Weight of the light source	gram	375	165	79
Output power / weight	watt /gram	2,8	3,0	2,7
Number of diodes per light-source	pcs.	696	336	144
Manufacturer diodes			Osram	
Operating temperature diodes	degrees Celsius		-40 to 120	
Junction temperature absolute diode	degrees Celsius		150	
Wavelength	nm		444 to 457	
Viewing angle degree	Degrees		120	



-  Push-rod: 100m/22mm | Diodes: 696
-  Push-rod: 50m/20mm | Diodes: 696
-  Push-rod: 40m/18mm | Diodes: 336
-  Push-rod: 40m/15mm | Diodes: 144



CE



SAFE | MATURE | POWERFUL | RELIABLE | PROVEN

CIPP LINING MATERIALS



RESIN-CARRIER

Flexible synthetic fiber with PU coating (PAA-F-Liner) or GRP-carrier (PAA-GF-Liner)



RESIN-SYSTEMS

Styrene-free based on Vinylester (PAA-F-Liner or PAA-GF-Liner) or styrenated Polyester (PAA-GF-Liner)

Patent-protected photo-initiators developed for certified, approval- and standard-conform cure with Bluelight LED light-sources



CURE

LED technology in the wavelength of blue light (450nm)



CURING SPEEDS

0,30 - 1,65m/min (18-99m/h) depending upon type of liner, diameter, wall-thickness and light source



INSTALLATION

DN70 to DN500

Diameter changes: 2D and 3D possible depending on product

Length: up to 100m in one line (in exceptions even longer)

Bends or elbows: depending on product up to 90 degrees

Open ends: possible with the use of a translucent inner silicone hose



PRODUCTION

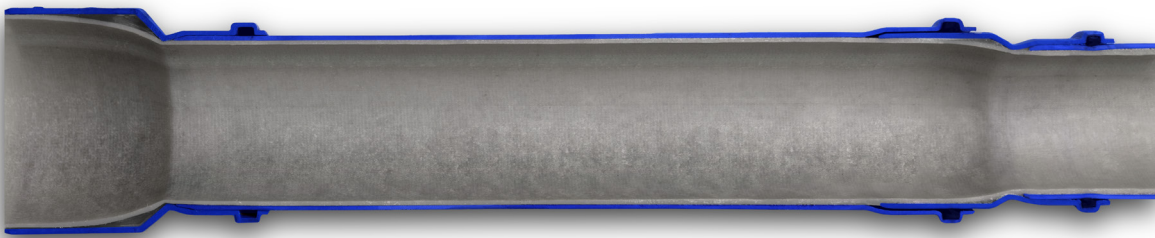
According to the standard EN ISO 9001



↕ PAA-F-Liner



↗ PAA-GF-Liner



Deutsches
Institut
für
Bautechnik

DIBt

DE

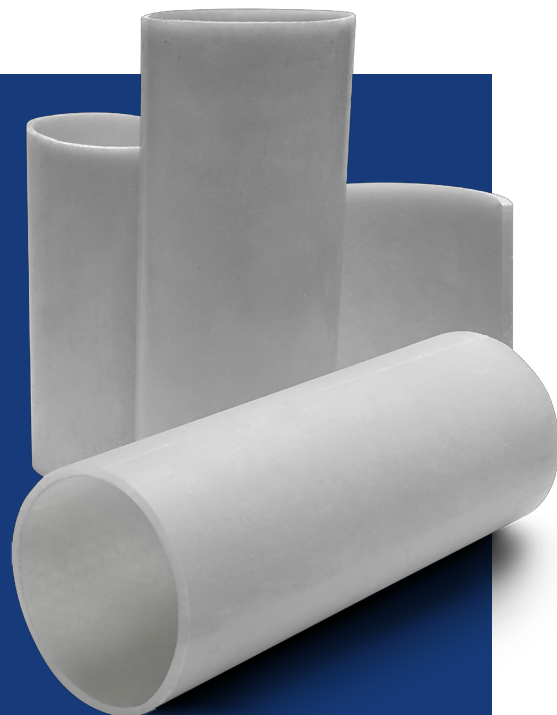
DTA

DOCUMENT
TECHNIQUE
D'APPLICATION

FR

WRC
approved

GB



SUPERIOR IN INSTALLATION | CONVINCING IN THE RESULT

WHY IS BLUELIGHT UNIQUE?

01

Over 300km worldwide installation length of PAA-F-Liners per year
Over 700 tons styrene free resin per year

02

Proven and documented process safety

03

Environmentally friendly resin, odorless and low-emission technology

04

High-quality result: top end-product with at least 50 years lifetime

05

Process technology approved by DIBT (Germany), WRC (UK) and CSTB (France)

06

More than 15 years practical development experience and on-site track record

07

Perfectly matched and harmonized LED light sources and CIPP materials out of one manufacturer

08

Between 90% and 99% CO2 savings compared to heat-curing systems

09

Minimum installation time, quick recommissioning of the renovated sections

ADVANTAGES

for contractors



- ✓ Liner installation is two to five times more efficient

- ✓ Possibility to check the liner before curing using the integrated camera of the LED head

- ✓ Storage stability of the impregnated liners

- ✓ Fully automated quality assurance and documentation of all relevant parameters

- ✓ Instruction manual including definitions of all procedures

- ✓ Low space requirement for the installation equipment and maximum of mobility

- ✓ Fully software-controlled system technology

- ✓ Reduction of error potential compared to 2-component systems

- ✓ Maximum flexibility by choice of impregnating on site or obtaining pre-impregnated liners

- ✓ User support by a global player in trenchless renovation, remote maintenance and remote sessions are possible

- ✓ Less waste (reusable silicone supporting hoses, excess resin from impregnation can be re-used)

ADVANTAGES

for engineers, planners and architects



- ✓ Quick and reliable project management

- ✓ Fully automated quality assurance and documentation of all relevant parameters

- ✓ Reduction of error potential compared to 2-component systems

- ✓ Installation length up to 100m in one line (in exceptions even longer)

- ✓ Proven process-safety

- ✓ Europe-wide network of well-qualified users available



ADVANTAGES

for private, public and industrial building owners
as well as property managers



- ✓ Increase in value of real estate and land through sustainable investment

- ✓ Long-term compliance with official and general drainage requirements

- ✓ Restoration of water tightness and static carrying capacity of the pipeline and improved hydraulic capacity (prevention of blockages)

- ✓ Highest economy and minimal impairment through unique speed

- ✓ No chemical odors during work





”

„Bluelight is not only a reliable and highly efficient LED system with perfectly matched liners and curing equipment, it also provides us with first-rate support and service.“

Wachtel AG

”

„With the Bluelight LED system we achieved noticeable improvements in efficiency on the construction site right from the first minute.“

WeVo

”

„Fast LED curing, a professional online ordering system and flexible remote maintenance via cell phone: the mature, innovative products from Bluelight GmbH help us to be a strong competitor on the market. That's why we're so glad we chose the Bluelight LED system.“

Dommel

Bluelight GmbH
Motorstraße 25
70499 Stuttgart
Germany

Phone +49 711 887724 200
info@bluelight-gmbh.de
www.bluelight-gmbh.de

**BLUeLiGHT**[®]